

New Hours Next Year!

Starting in the 2010-2011 school year, Family Montessori is happy to announce that we will be moving to THREE HOUR work-cycles at both of our locations. The hours your child attends school will be as follows:

AM Session:

8:30 to 11:30

PM Session:

12:45 to 3:45

Extended Day:

8:30 to 3:45*

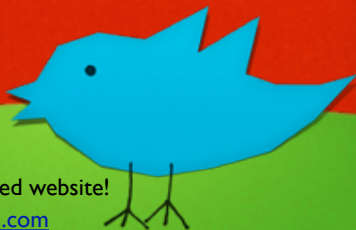
(*end time pending licensing approval)

FMSS has been hoping to introduce a three-hour work cycle for a number of years. We all anticipate that this small change will bring many benefits to the children: less frustration, greater concentration, and the ability to do longer work without interruption.

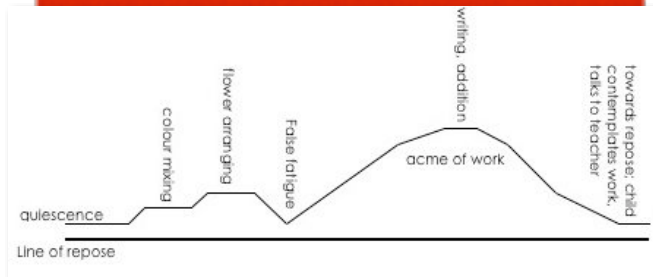
The children are in the process of building themselves, so we must remove as many obstacles as we can during this process.

For more info please see over, or ask your child's teacher.

Check out our improved website!
www.familymontessori.com



The following represents an example of a productive work cycle.



Adapted from the book: *The Advanced Montessori Method I*

One of the characteristics of the Montessori classroom is the ability to work for long periods of unbroken time. Approximately 1 1/2 hours into the work cycle children will experience **false fatigue**: they become restless, the classroom becomes noticeably louder, and the children take a “mental break” from their work.

If the teacher allows the children the time they need to experience the restlessness of false fatigue, they will soon settle into their most difficult work choice of the cycle and stay with it for the longest time. During this work, their concentration is deepest and they typically make the greatest strides in the development of skills and the acquisition of knowledge. The introduction of the three-hour work period will allow for the completion of this cycle.



FMSS Office: 4196 West 4th Ave
Vancouver, BC V6R 4J5
604.224.2643

Sitka: 604.731-8810 Jericho: 604.224.2633